



# MONTHLY MEMBERSHIP PROGRESS REPORT

District 5M 2

Results as of: 02/28/2018

GMT: MICHAEL MOLENDIA

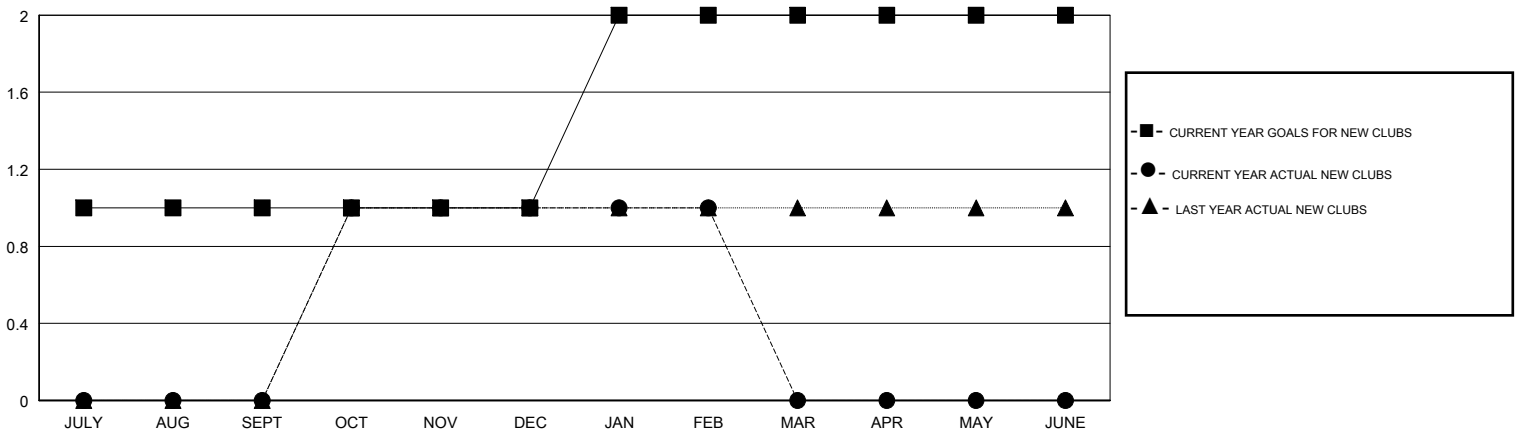
LOCATION MINNESOTA

GMT CA

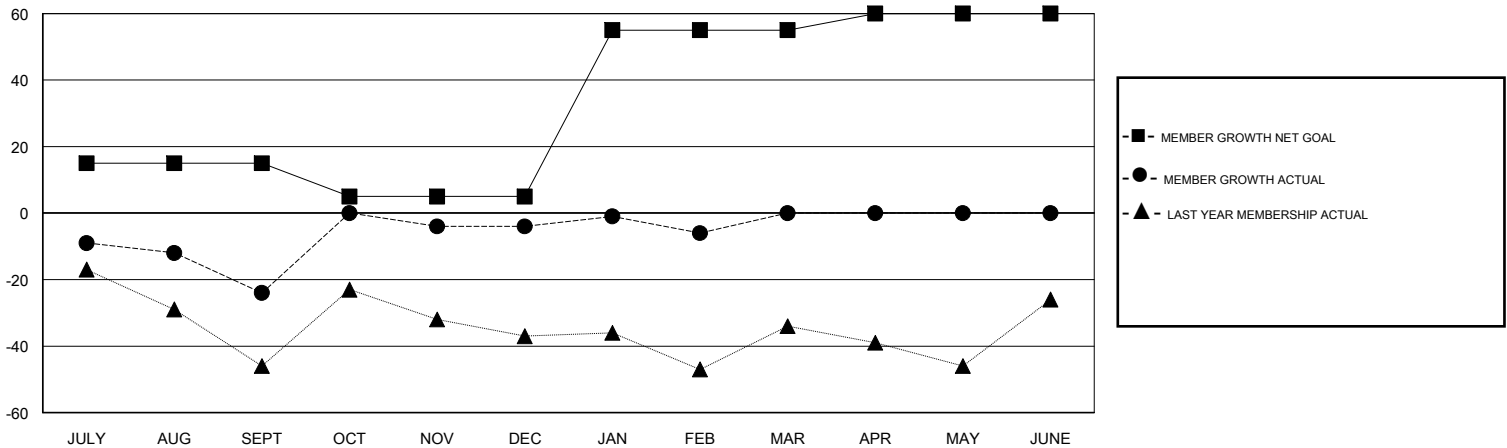
Clubs			
RESULTS FOR 2017-2018			
QUARTER	NEW CLUB GOAL	NEW CLUBS	DROPPED CLUBS
JULY/AUG/SEPT	1	0	0
OCT/NOV/DEC	0	1	0
JAN/FEB/MAR	1	0	0
APR/MAY/JUNE	0	0	0

Members			
RESULTS FOR 2017-2018			
QUARTER	MEMBER GROWTH NET GOAL	MEMBER GROWTH ACTUAL	DROPPED MEMBERS ACTUAL (including transfers)
JULY/AUG/SEPT	15	19	39
OCT/NOV/DEC	-10	68	47
JAN/FEB/MAR	50	29	29
APR/MAY/JUNE	5	0	0

GOALS AND ACTUAL NEW CLUBS CUMULATIVE



GOALS AND ACTUAL MEMBERS CUMULATIVE



DROPPED CLUBS: 0	31 CLUBS OF 65 ADDED 1 OR MORE NEW MEMBERS	<u>GENDER DISTRIBUTION</u>	
DROPPED MEMBERS		MALE	1,736 (70.74%)
DECEASED	14	FEMALE	718 (29.26%)
CLUB CANCELLED	0	Women Percentage Fiscal Year Goal: 28%	
OTHER	101	TOTAL FAMILY UNIT MEMBERS	405
TOTAL	115	FAMILY MEMBERS PAYING HALF DUES	204

[CLICK HERE FOR CUMULATIVE MEMBERSHIP DATA](#)